

WILLOUGHBY PLAT NO. 3

BEING A TRACT OF LAND LYING IN THE HANSON GRANT SITUATED IN MARTIN COUNTY, FLORIDA.

I, MARSHA STILLER, CLERK OF THE CIRCUIT COURT OF MARTIN COUNTY, FLORIDA, HEREBY CERTIFY THAT THIS PLAT WAS FILED FOR RECORD IN PLAT BOOK 11, PAGE 73, MARTIN COUNTY, FLORIDA, PUBLIC RECORDS, THIS DAY OF _____, 1988.

MARSHA STILLER, CLERK
CIRCUIT COURT
MARTIN COUNTY, FLORIDA

BY: _____
DEPUTY CLERK

FILE NO. _____

BASIS OF BEARINGS
BEARINGS SHOWN HEREON ARE REFERENCED TO U.S. HIGHWAY NO. 1 AS SHOWN ON RIGHT-OF-WAY MAP FOR SECTION NO. 8901-112 DATED 8-19-60.

- LEGEND**
- ⊠ FOUND PERMANENT REFERENCE MONUMENTS. (PRM) LB #3881 UNLESS OTHERWISE NOTED.
 - SET PERMANENT REFERENCE MONUMENT. (PRM)
 - FOUND PERMANENT CONTROL POINT. (PCP)
 - SET PERMANENT CONTROL POINT. (PCP)
 - G.C. INDICATES GOLF COURSE TRACTS.
 - G.C.W. INDICATES GOLF COURSE WATER MANAGEMENT TRACTS.
 - E.C.A. INDICATES EXCLUSIVE COMMON AREA'S.
 - C.A. INDICATES COMMON AREA'S.

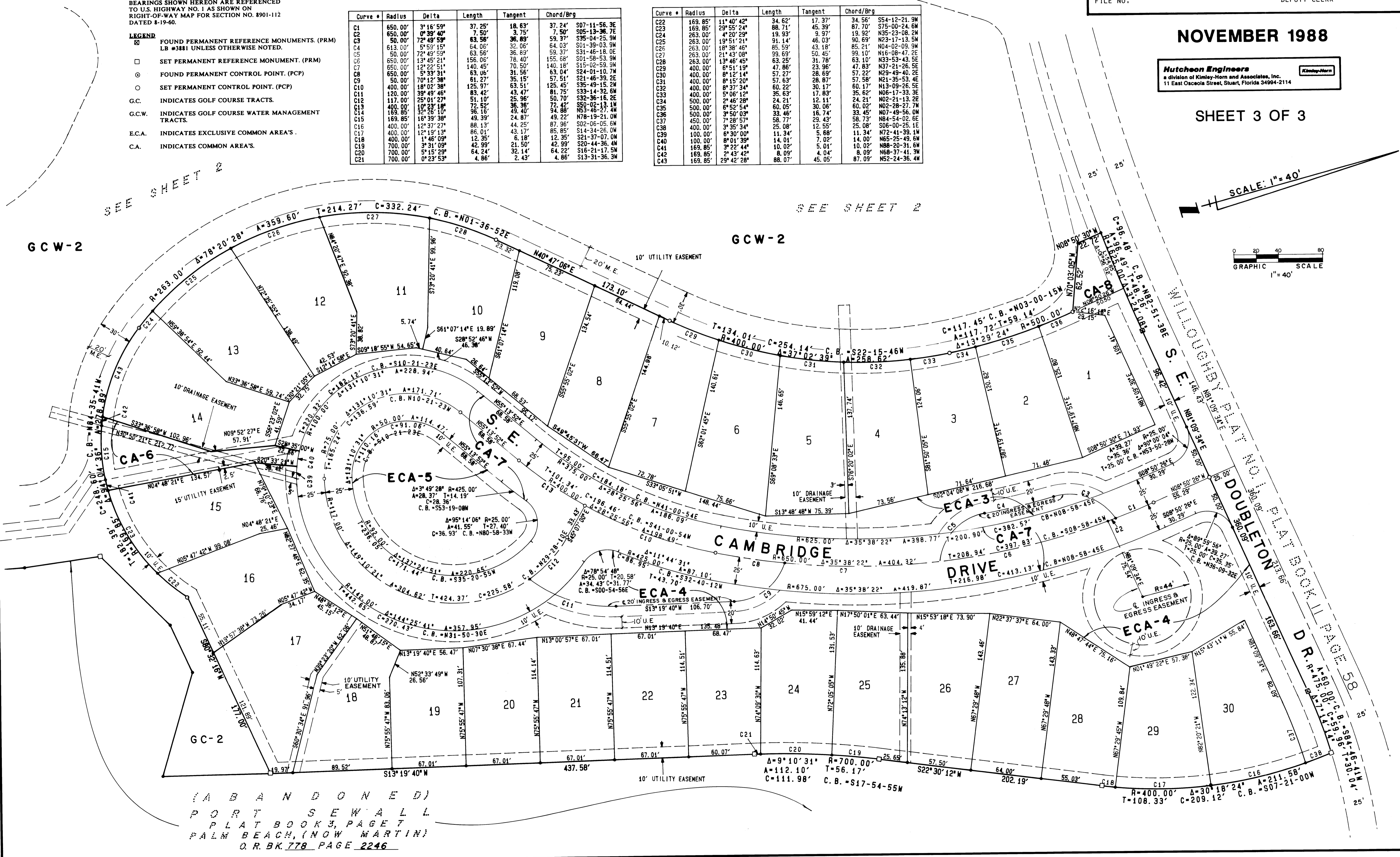
Curve #	Radius	Delta	Length	Tangent	Chord/Brg
C1	650.00'	3°16'59"	37.25'	18.63'	37.24' S07°11'56.9E
C2	650.00'	0°39'40"	7.50'	3.75'	S05°13'36.7E
C3	50.00'	72°49'59"	63.58'	36.89'	S35°04'25.9M
C4	613.00'	5°59'15"	64.06'	32.06'	S01°39'03.9M
C5	50.00'	72°49'59"	63.56'	36.89'	S31°46'18.0E
C6	650.00'	13°45'21"	156.06'	78.04'	S01°58'53.9M
C7	650.00'	12°22'51"	140.45'	70.50'	S15°02'59.9M
C8	650.00'	5°33'31"	63.06'	31.56'	S24°01'10.7M
C9	50.00'	70°12'38"	61.27'	35.15'	S21°46'39.2E
C10	400.00'	18°02'38"	125.97'	63.51'	S35°49'15.2M
C11	120.00'	39°49'46"	83.42'	43.47'	S33°14'32.6M
C12	117.00'	25°01'27"	51.10'	25.96'	S32°36'16.2E
C13	400.00'	10°23'18"	72.52'	36.36'	S50°02'13.1M
C14	169.85'	32°26'10"	96.16'	49.40'	N53°46'27.4M
C15	169.85'	16°39'38"	49.39'	24.87'	N78°19'21.0M
C16	400.00'	12°37'27"	86.13'	44.25'	S02°05'05.6M
C17	400.00'	12°19'13"	86.01'	43.17'	S14°34'26.0M
C18	400.00'	1°46'09"	12.35'	6.18'	S21°37'07.0M
C19	700.00'	3°31'09"	42.99'	21.50'	S20°44'36.4M
C20	700.00'	5°15'29"	64.24'	32.14'	S16°21'17.5M
C21	700.00'	0°23'53"	4.86'	2.43'	S13°31'36.3M

Curve #	Radius	Delta	Length	Tangent	Chord/Brg
C22	169.85'	11°40'42"	34.62'	17.37'	S54°12'21.9M
C23	169.85'	29°55'24"	88.71'	45.39'	S75°00'24.6M
C24	263.00'	4°20'29"	19.93'	9.97'	N35°23'08.2M
C25	263.00'	19°51'21"	91.14'	46.03'	N23°17'13.5M
C26	263.00'	18°38'46"	85.59'	43.18'	N04°02'09.9M
C27	263.00'	21°43'08"	99.69'	50.45'	N16°08'47.2E
C28	263.00'	13°46'45"	63.25'	31.78'	N33°53'43.5E
C29	400.00'	6°51'19"	47.86'	23.96'	N31°21'26.5E
C30	400.00'	8°12'14"	57.27'	28.69'	N29°49'40.2E
C31	400.00'	8°15'20"	57.63'	28.87'	N21°35'53.4E
C32	400.00'	8°37'34"	60.22'	30.17'	N13°09'26.5E
C33	400.00'	5°06'12"	35.63'	17.83'	N06°17'33.3E
C34	500.00'	2°46'28"	24.21'	12.11'	N02°21'13.2E
C35	500.00'	6°52'54"	60.05'	30.06'	N02°28'27.7M
C36	500.00'	3°50'03"	33.46'	16.74'	N07°49'56.0M
C37	450.00'	7°28'57"	58.77'	29.43'	N58°73'44.2E
C38	400.00'	3°35'34"	25.08'	12.58'	S06°00'25.1E
C39	100.00'	6°30'00"	11.34'	5.68'	N72°41'39.1M
C40	100.00'	8°01'39"	14.01'	7.02'	N65°25'49.6M
C41	169.85'	3°22'44"	10.02'	5.01'	N88°20'31.6M
C42	169.85'	2°43'42"	8.09'	4.04'	N68°37'41.3M
C43	169.85'	29°42'28"	88.07'	45.05'	N52°24'36.4M

NOVEMBER 1988

Hutchison Engineers
a division of Kimley-Horn and Associates, Inc.
11 East Osceola Street, Stuart, Florida 34984-2114

SHEET 3 OF 3



(ABANDONED)
PORT SEWALL
PLAT BOOK 3, PAGE 7
PALM BEACH, (NOW MARTIN)
D. R. B. K. 778 PAGE 2246